



2016 ABF Asian Championships-Long

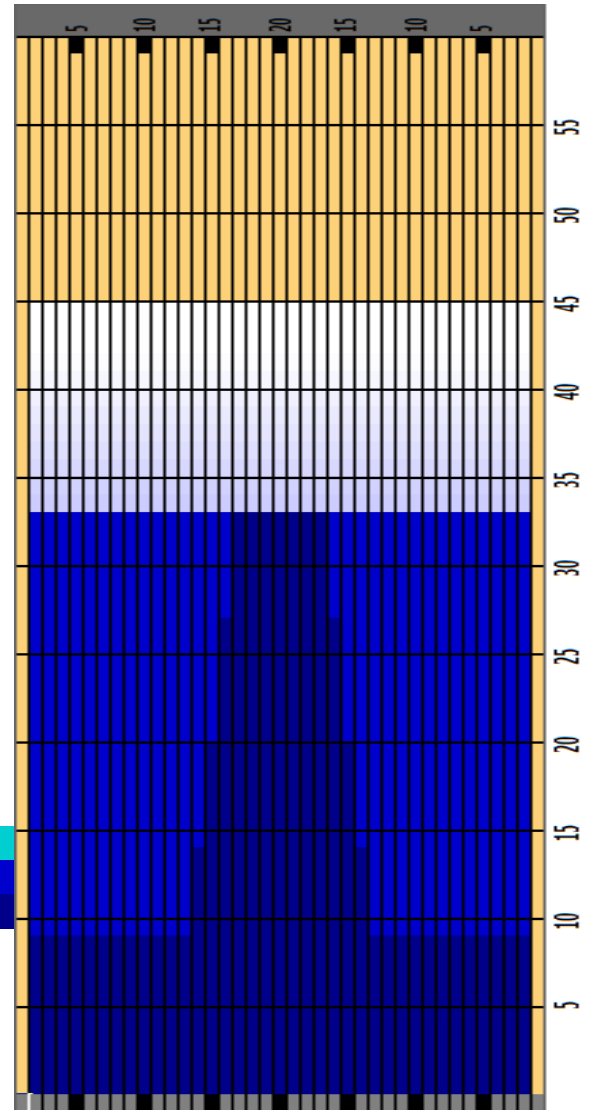


Oil Pattern Distance	45	Reverse Brush Drop	42	Oil Per Board	Multi ul
Forward Oil Total	13.885 mL	Reverse Oil Total	11.47 mL	Volume Oil Total	25.355 mL
Tank Configuration	N/A	Tank A Conditioner	ICE	Tank B Conditioner	ICE

	START	STOP	LOADS	MICS	SPEED	BUFFER	TANK	CROSSED	START	END	FEET	T.OIL
1	2L	2R	3	40	14	3	A	111	0.0	3.9	3.9	4440
2	2L	2R	3	45	14	3	A	111	3.9	9.8	5.9	4995
3	14L	14R	2	50	18	3	A	26	9.8	14.9	5.1	1300
4	15L	15R	2	50	18	3	A	22	14.9	20.0	5.1	1100
5	16L	16R	3	50	18	3	A	27	20.0	27.6	7.6	1350
6	17L	17R	2	50	22	3	A	14	27.6	33.8	6.2	700
7	2L	2R	0	50	22	3	A	0	33.8	45.0	11.2	0

	START	STOP	LOADS	MICS	SPEED	BUFFER	TANK	CROSSED	START	END	FEET	T.OIL
1	2L	2R	0	50	30	3	A	0	45.0	33.0	-12.0	0
2	2L	2R	2	50	22	3	A	74	33.0	26.8	-6.2	3700
3	2L	2R	2	45	22	3	A	74	26.8	20.6	-6.2	3330
4	2L	2R	3	40	22	3	A	111	20.6	11.3	-9.3	4440
5	2L	2R	0	40	18	3	A	0	11.3	0.0	-11.3	0

Cleaner Ratio Main Mix NA Forward
 Cleaner Ratio Back End Mix NA Reverse
 Cleaner Ratio Back End Distance NA Combined
 Buffer RPM: 4 = 720 | 3 = 500 | 2 = 200 | 1 = 50



Item	3L-7L:18L-18R	8L-12L:18L-18R	13L-17L:18L-18R	18L-18R:17R-13R	18L-18R:12R-8R	18L-18R:7R-3R
Description	Outside Track:Middle	Middle Track:Middle	Inside Track:Middle	Middle:Inside Track	Middle:Middle Track	Middle:Outside Track
Track Zone Ratio	1.8	1.8	1.29	1.29	1.8	1.8

